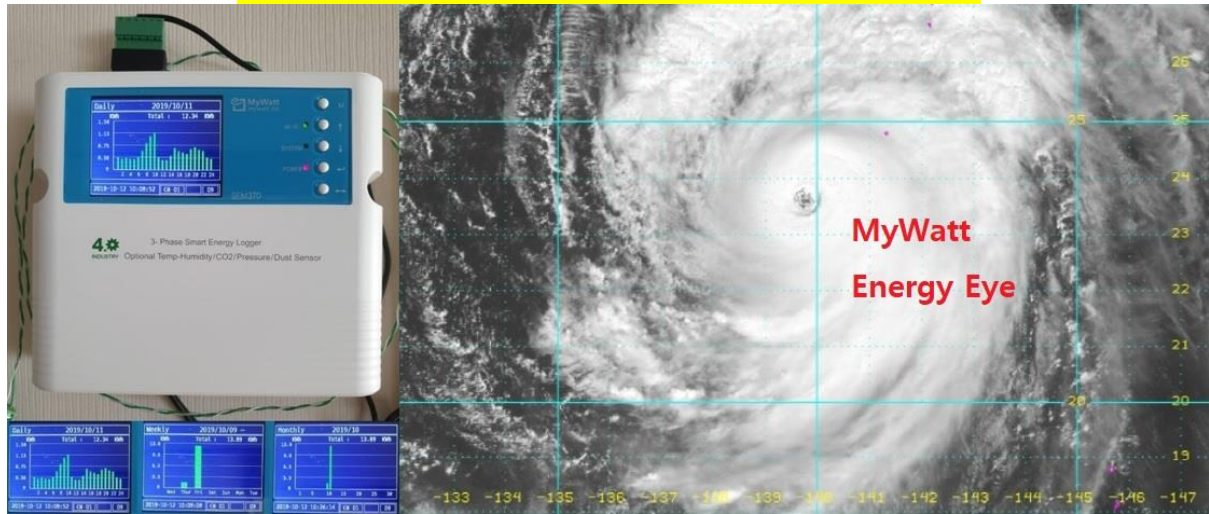


MyWatt Energy-Eye



Electricity energy consumption is increasing continuously year by year due to the human welfare and good life. The increased electricity consumption will make more CO₂ gas and it will make global warming amplification.

Therefore, we must save energy even though we need energy consumption.

But how can we save the energy without energy monitor?

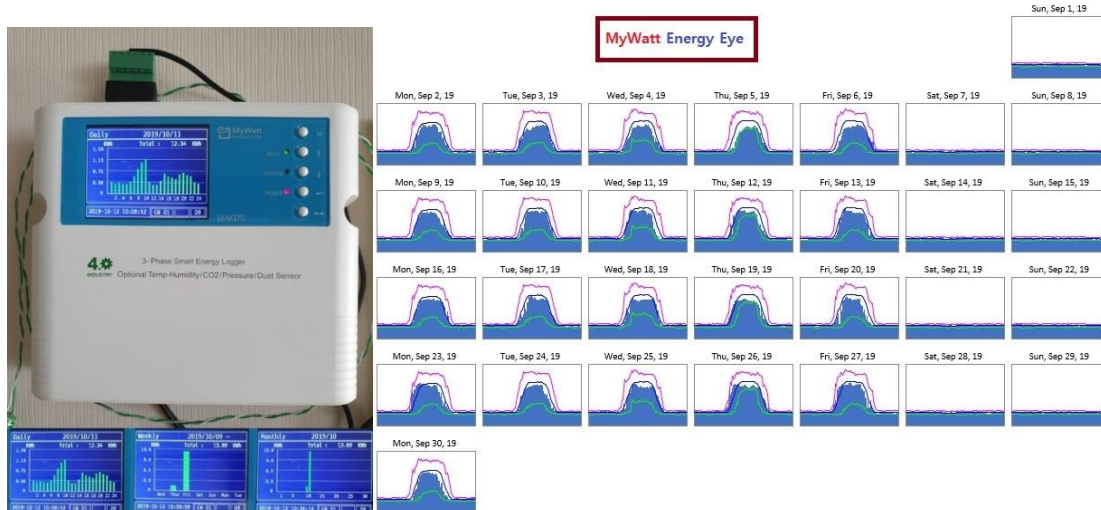
Normally we have only a few energy totalizers at home or factory, But we cannot measure daily, weekly and monthly energy by this totalizer immediately. We must calculate by using calculator at the end of the month. Or we can get it when we get the bill from the energy company at the end of the month.

Only MyWatt Energy Eye can see instant real-time energy (W), total energy (kWh) since the starting of the meter. Or you can see the lcd display for daily, weekly, monthly and yearly data by chart and graph as the above photo.

It is unique device in the world. No competing items in the worldwide market which can save energy by seeing the data at a glance and do action immediately.

We do not need pc, pc software, web server for to get this information at the factory ground site.

You can save 5 to 10% energy immediately from next month. Please try and get the result.



MyWatt Energy–Eye description:

1) Micro SD–Card log the 1 minute interval data for 3–phase. Realtime energy (W), Active power (Wh), Reactive power, Apparent power, Power Factor, Frequency, Temperature and Humidity.

2) Web cloud service by using TCP/IP. If you go to our homepage www.mywatt.biz , you can see the detail of web cloud service. You can also use 3G or 4G modem instead of 2.4G line.

Daily, weekly, monthly, yearly and by–year graph and data file.

3) If you add WIFI module on Energy–Eye, you can also get web cloud service. You can use WIFI module when the LAN cable line is not available.

WIFI pairing method : https://www.youtube.com/watch?v=QTEu8_2TPL0

4) If you are using Modbus RS–485 connection, you can link up to 200 channels by using 2–wire cable.

5) If you are using LORA module option, you can link up to 200 channels Energy–Eye and get a complete big building data to the web cloud service directly.

web cloud server: www.mywatt.pro sample page: <http://mywatt.biz/cloud/>

6) App service: Please download “mywattpro” app at Android Shop.

Sample site: www.mywatt.biz/app/app2

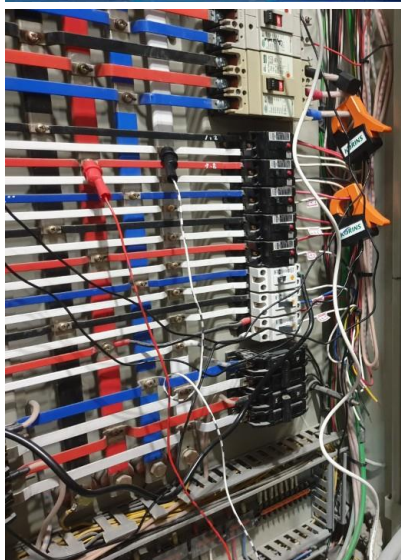
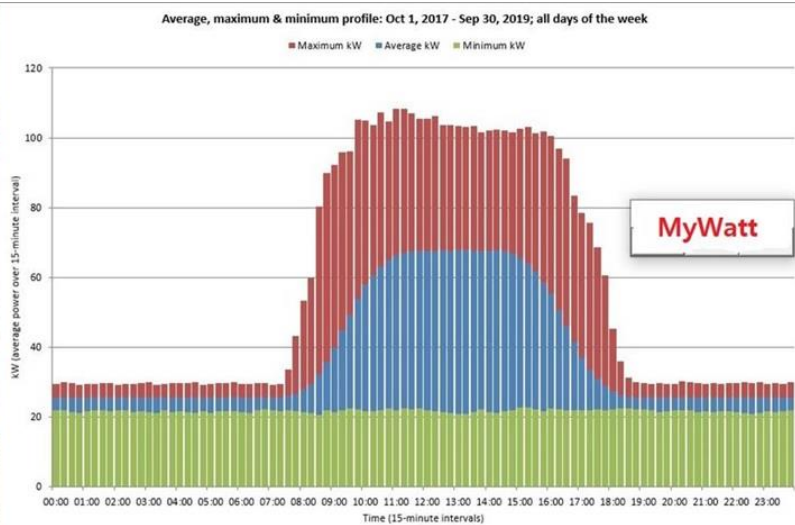
7) Energy–Eye have 4–magnets on the backside and you can easily attach it on steel plate.

8) Energy–Eye can add Temperature and humidity sensor, Pressure sensor or Dust sensor.

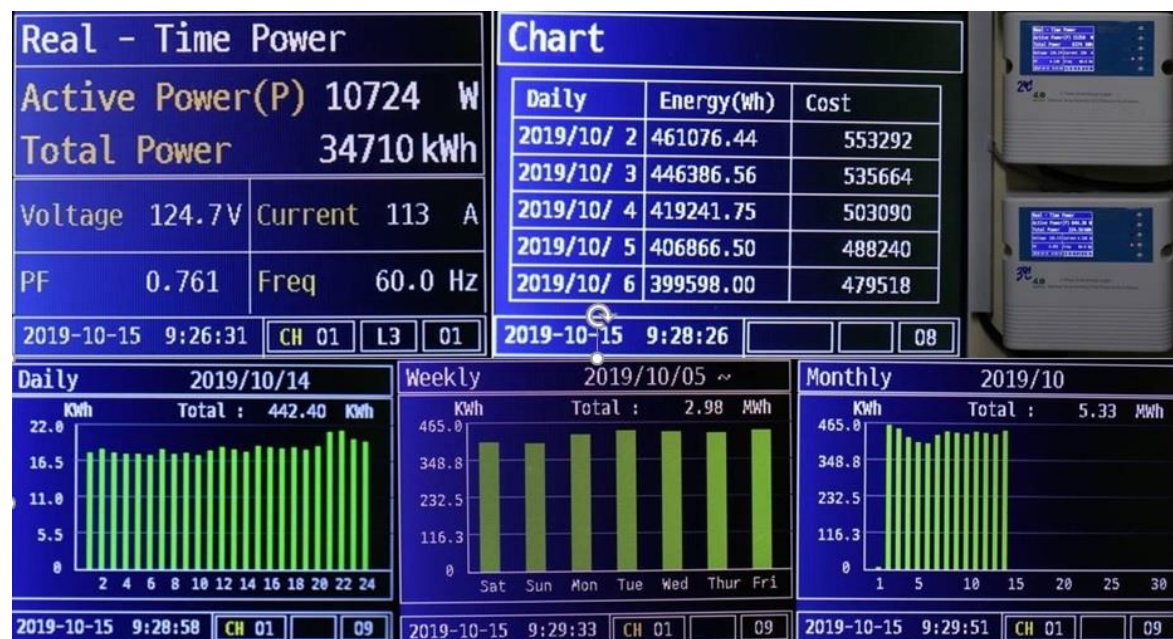
9) Energy–Eye could be use Single phase 3 channel type or 3–Phase single channels. In case of 3–channel application, we can see 3P, L1, L2 and L3 data

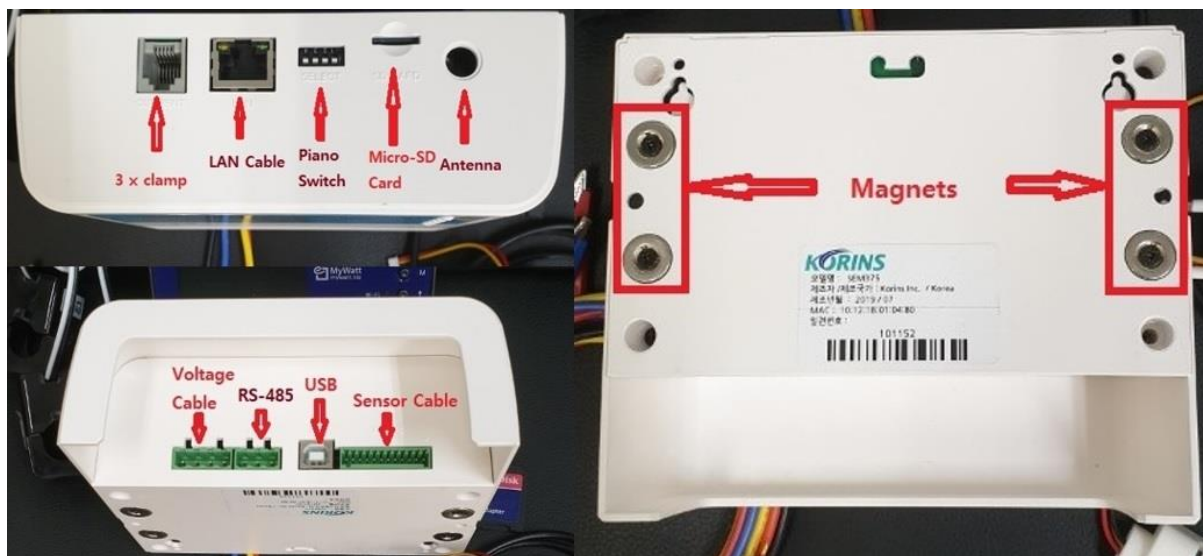
separately.

HOME ENERGY



FACTORY ENERGY

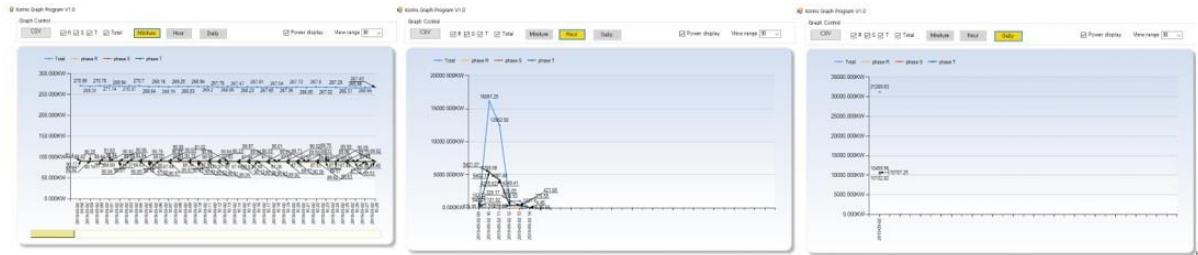




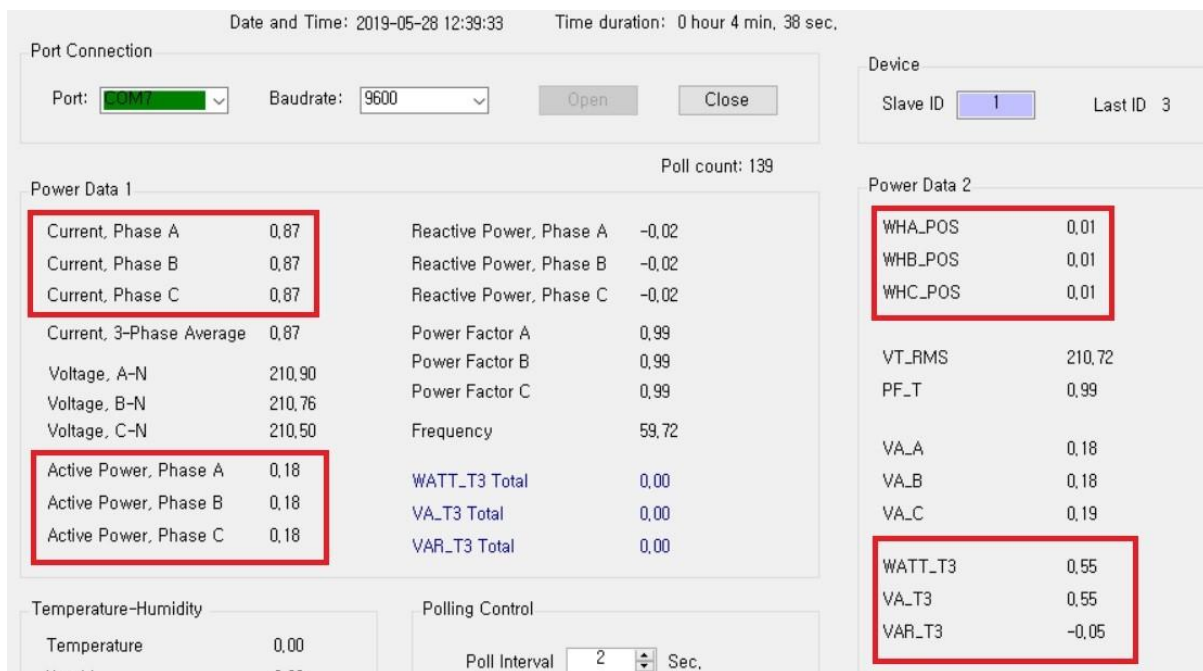
SD-CARD DATA LOGGING

	A	B	C	D	E	F	G	H	I	J	K	L	M	N	O	P
1	Count	저장시간	전류R상	전류S상	전류T상	3상평균전	상전압R상	상전압S상	상전압T상	유효전력R	유효전력S	유효전력T	무효전력R	무효전력S	무효전력T	역률R상
2	COUNT	DATETIME	IR	IS	IT	LA	VR	VS	VT	WATT_R	WATT_S	WATT_T	VAR_R	VAR_S	VAR_T	PFR
3	4215	2017-02-02 0:00	0.05	0.04	0.04	0.04	215.27	215.27	215.28	2.37	2.79	2.8	0.29	0.02	0	0.23
4	4216	2017-02-02 0:01	0.05	0.04	0.04	0.04	216.67	216.68	216.68	1.57	2.56	2.31	-0.01	0.23	0.31	0.16
5	4217	2017-02-02 0:02	0.05	0.04	0.04	0.04	216.48	216.48	216.48	2.02	2.74	2.31	-0.2	-0.11	0.25	0.19
6	4218	2017-02-02 0:03	0.05	0.04	0.04	0.04	217.05	217.05	217.05	1.69	2.41	3	-0.28	-0.3	0.22	0.17
7	4219	2017-02-02 0:04	0.05	0.04	0.04	0.04	216.4	216.4	216.4	2.74	2.68	2.28	-0.31	-0.12	-0.38	0.27

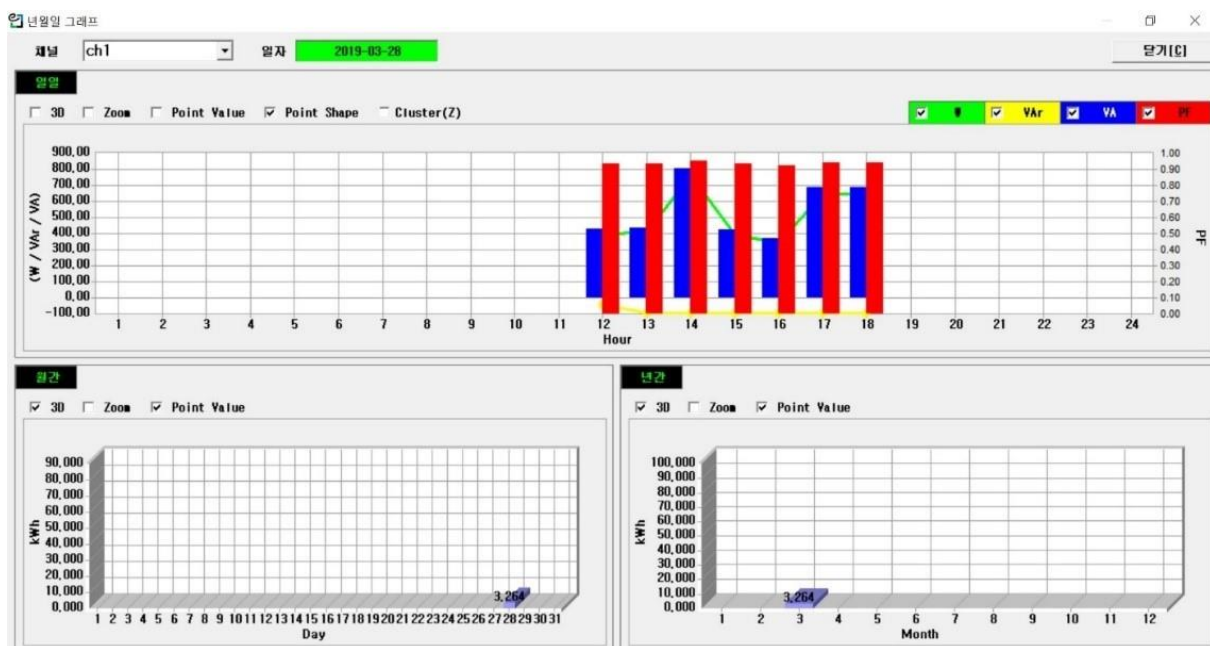
SD CARD GRAPHIC READER (DAY, HOUR, MONTH)



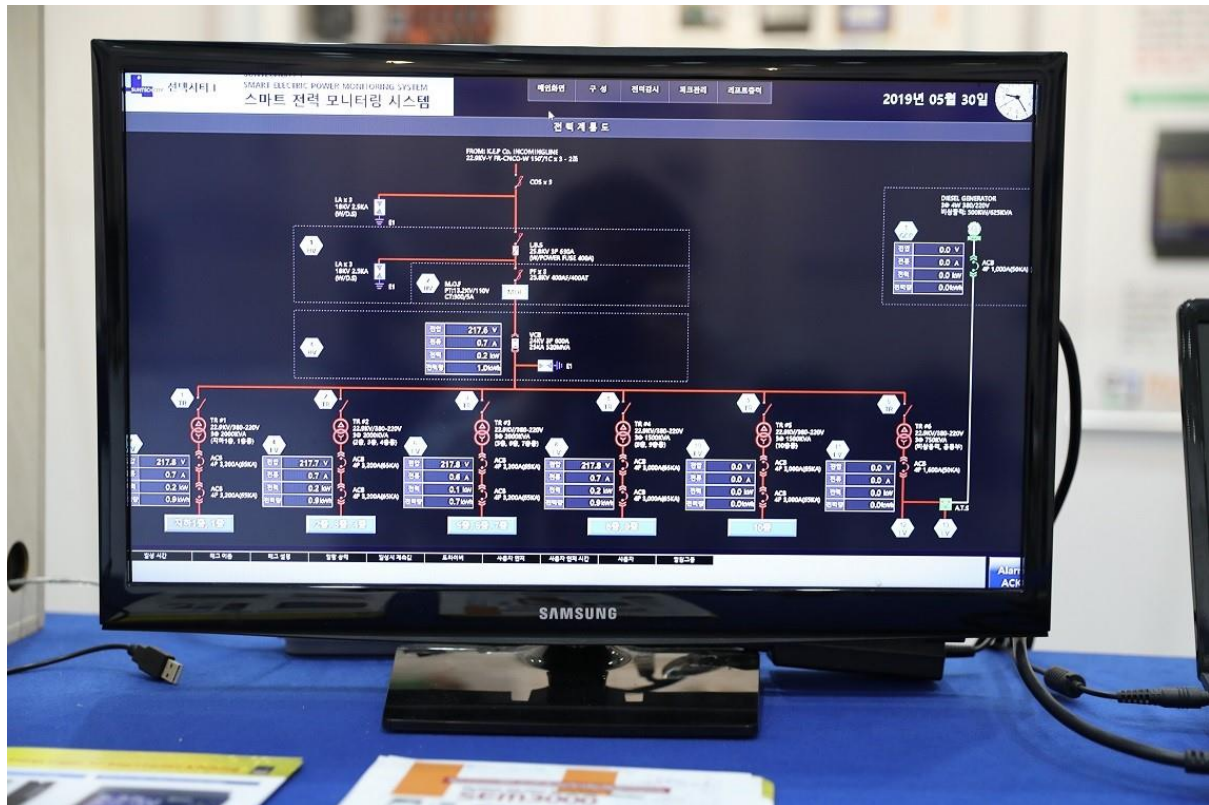
RS-485 SOFTWARE



GRAPHIC SOFTWARE MODBUS RS-485



BEMS SOFTWARE



WEB CLOUD SERVICE

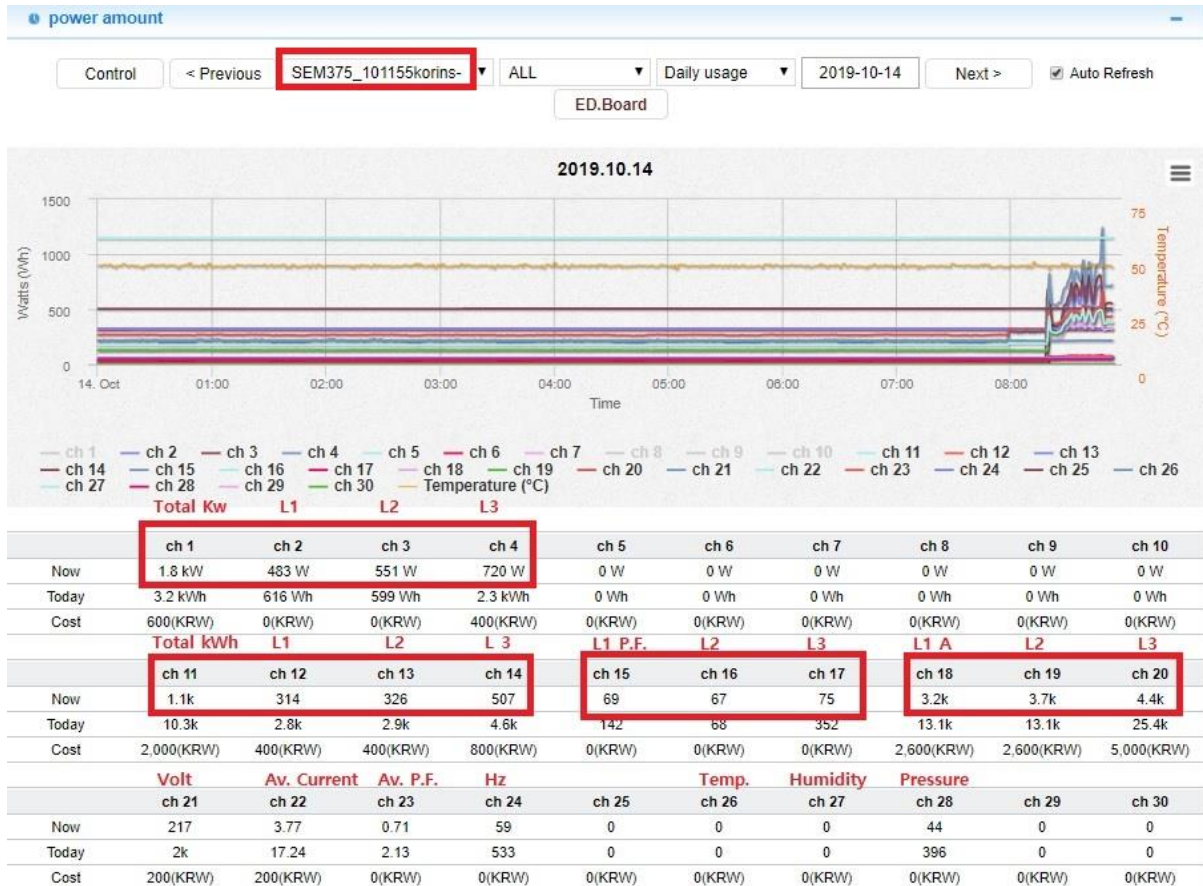
SEM3000

[Realtime](#) [Sem3000](#) [Account](#) [Logout](#)

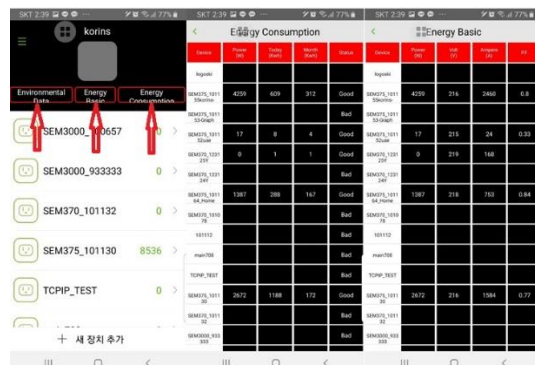
Realtime

UserID	korins	Date/Time	2019-10-14 08:26	<input checked="" type="checkbox"/> Auto Refresh								
NO	Appication	S/N	Selection	Active Power(W)	Integrating Power(kWh)	Last Month(kWh)	Today(kWh)	This Month(kWh)	This Month Cost(W)	This Year(kWh)	Status	Graph
16	SEM3000_101191	101191	-----	realtime power								view
15	3p3p	101196	-----									view
14	SEM375 101155korins-	101155	SEM370	1263	1147	974	2	173	₩22,490	1147	Good	view
13	SEM375 101153-Graph	101153	SEM370	14	2		0	2	₩260	2	Good	view
12	SEM375 101152uae	101152	SEM370			16					Bad	view
11	SEM370 123125Y	123125	SEM370								Bad	view
10	SEM370 123124Y	123124	SEM370								Bad	view
9	SEM375 101164 Home	101164	SEM370	672	48	538	5	48	₩6,240	48	Good	view
8	SEM370 101078	101078	SEM370								Bad	view
7	101112	101112	SEM370								Bad	view
6	SEM370 101057_708	101057	SEM370	35	18	6	1	12	₩1,560	18	Good	view
5	TCPIP_TEST	900002	SEM370								Bad	view
4	SEM375 101130_aircon	101130	SEM370	697	1412	1359	1	53	₩6,890	1412	Good	view

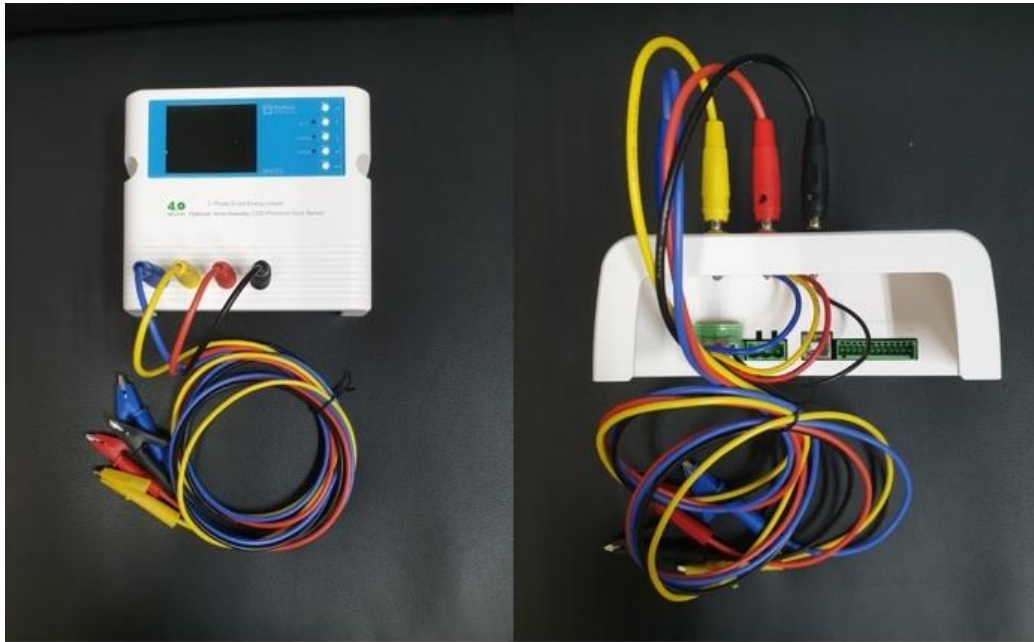
view graph



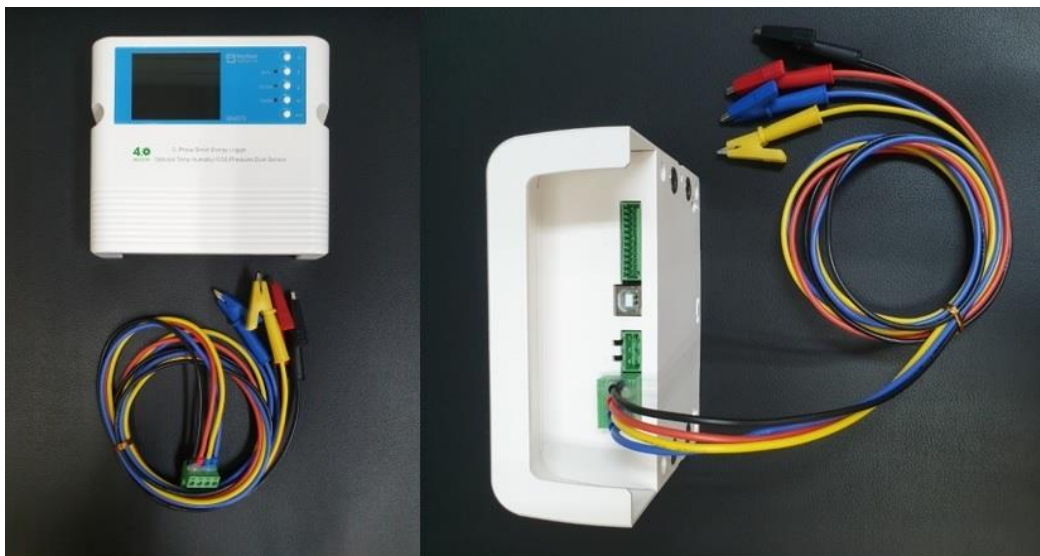
APPLICATION : [MYWATTPRO](#)



SEM375 OPTIONAL ITEMS



SEM375-A3CA CABLE



SEM375 Portable Smart Energy Logger - 4 Wire Voltage Cable

SEM375-A2CA



Mywatt Inc.

Rm. 708, Dunchon-daero #474, Jungwon-Gu, Seongnam City, Gyeonggi Province, Korea

Postcode: 13229

hyh@korins.kr Mobile: +82-10-8905-1244